



West Elevation

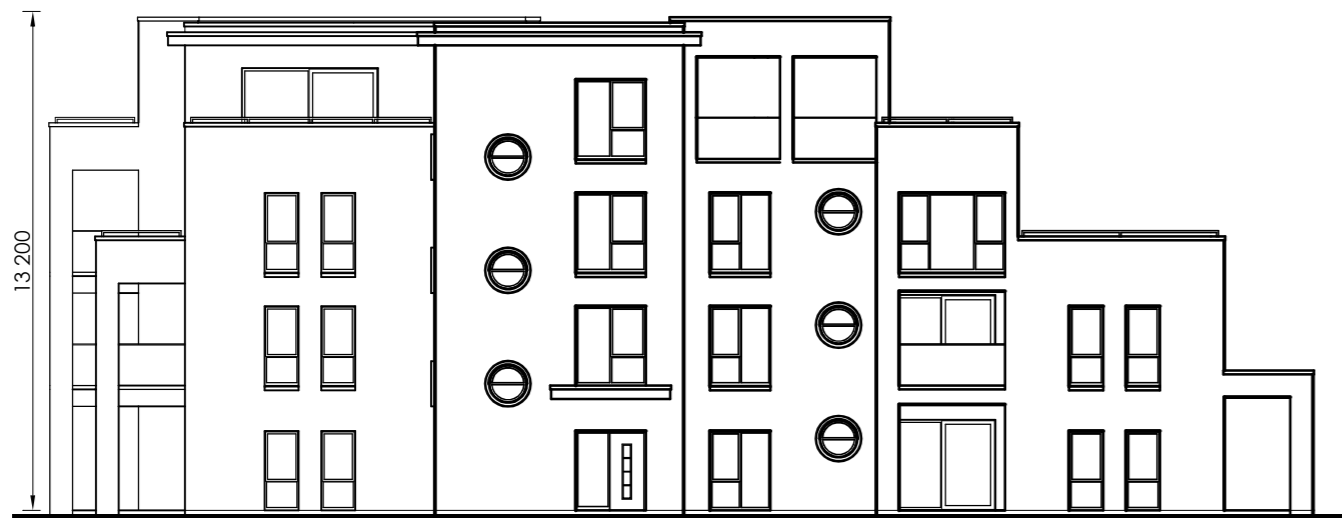
Scale 1:200

Crystic fibreglass flat roof membrane to roof

Selected plaster finish

Selected double/triple glazed windows & doors

Smooth plaster plinth



South Elevation

Scale 1:200

Crystic fibreglass flat roof membrane to roof

Selected plaster finish

Selected double/triple glazed windows & doors

Smooth plaster plinth



East Elevation

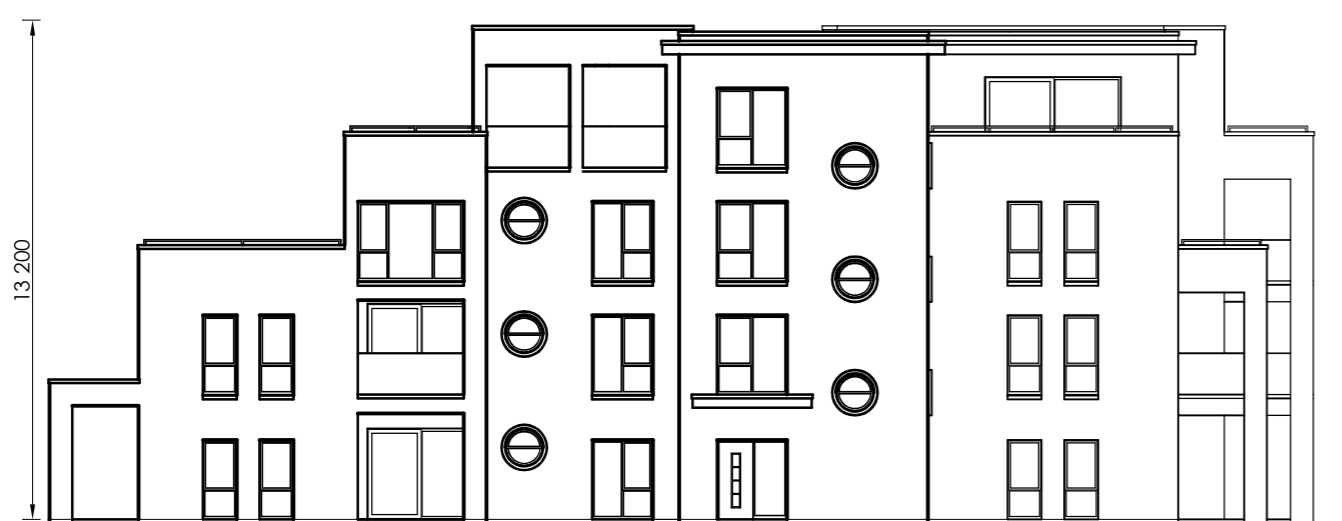
Scale 1:200

Crystic fibreglass flat roof membrane to roof

Selected plaster finish

Selected double/triple glazed windows & doors

Smooth plaster plinth



North Elevation

Scale 1:200

Crystic fibreglass flat roof membrane to roof

External wall to be Insulated cavity construction, insulation in accordance with Part L specification

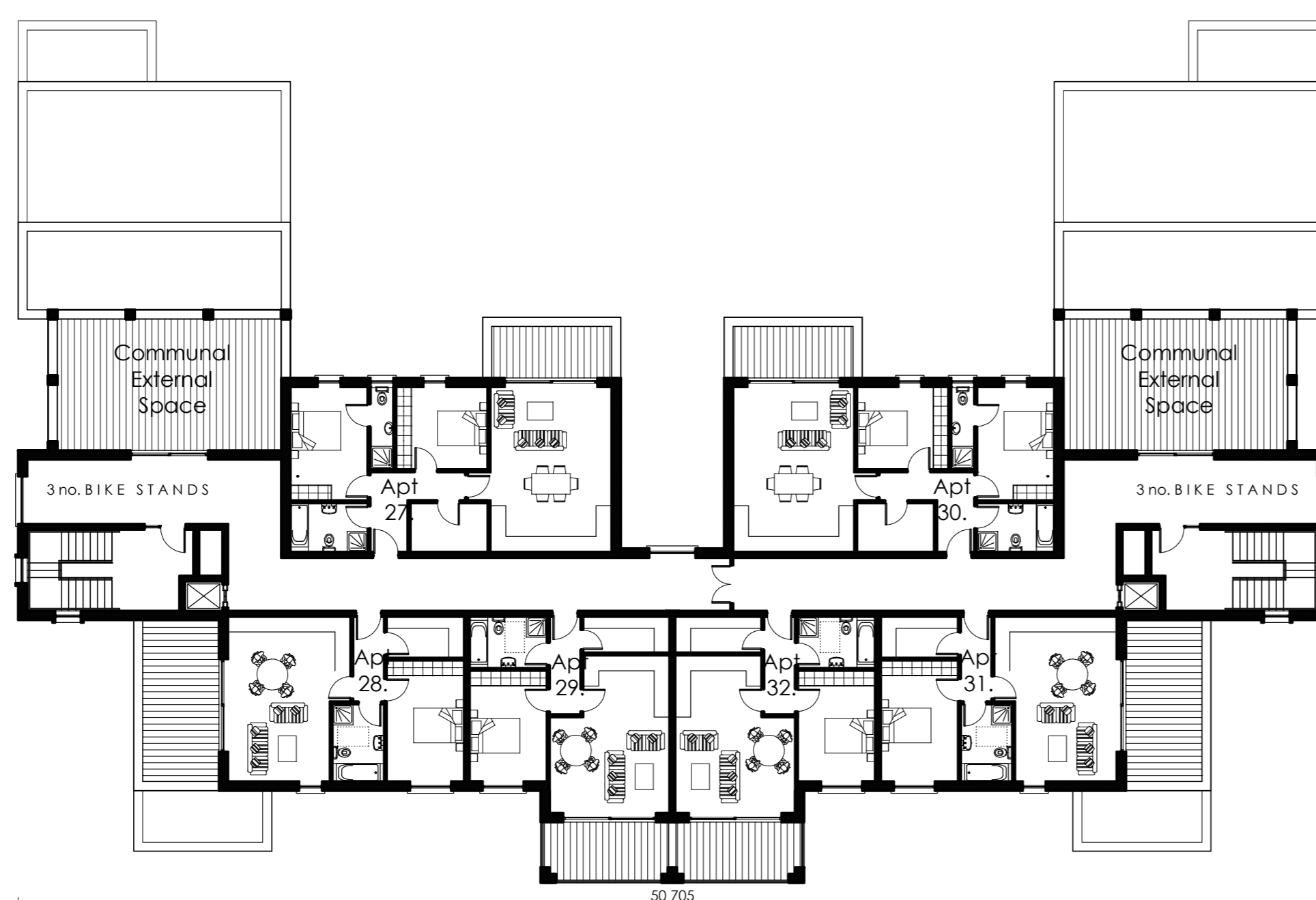
Precast concrete suspended floors to Engineers detail

In-situ concrete floor, insulation in accordance with Part L specification



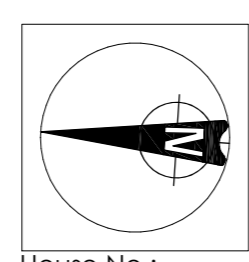
Cross Section

Scale 1:200

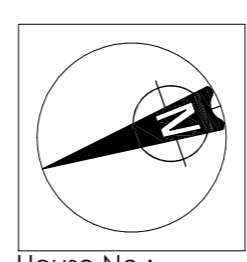


Third Floor Plan

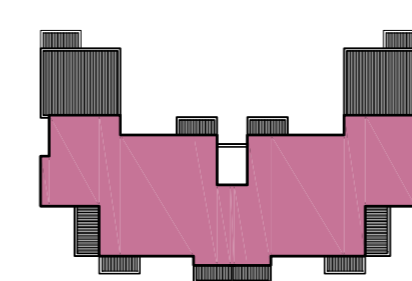
Scale 1:200



House No.: 208-239



House No.: 240-271



Type 'E' [Total Area = 2 x 3,324.0 m<sup>2</sup>]

- [2 x] 8 no. 1-bed [55.3 m<sup>2</sup>] Apartment nos. 5, 10, 14, 18, 22, 26, 29 & 32
- [2 x] 4 no. 1-bed [56.8 m<sup>2</sup>] Apartment nos. 2, 7, 11 & 15
- [2 x] 2 no. 1-bed [57.9 m<sup>2</sup>] Apartment nos. 19 & 23
- [2 x] 2 no. 1-bed [58.6 m<sup>2</sup>] Apartment nos. 28 & 31
- [2 x] 14 no. 2-bed [79.7 m<sup>2</sup>] Apartment nos. 3, 4, 8, 9, 12, 13, 16, 17, 20, 21, 24, 25, 27 & 30
- [2 x] 2 no. 2-bed [100.5 m<sup>2</sup>] Apartment nos. 1 & 6

Revision	Description	Date
 <b>GLEESON MCSWEENEY</b>		
Project	Proposed residential development at Ballykeeffe, Raheen, Limerick. For: DW Raheen Developments Ltd.	Stage <b>Planning</b>
Title	Apartment Building Type E - Floor Plan & Elevations Sheet 2 of 2	
Scale	1:200 @ A1	Date December 2021
Drawn	M.M.	Rev 1704-10-130
		99 O'Connell St., Limerick T 061 412277 E info@gleesonmcsweeney.ie

ARCHITECTS